



# FISU WUC HANDBALL 2026

PESSAC / FRANCE



Ville de  
**PESSAC**

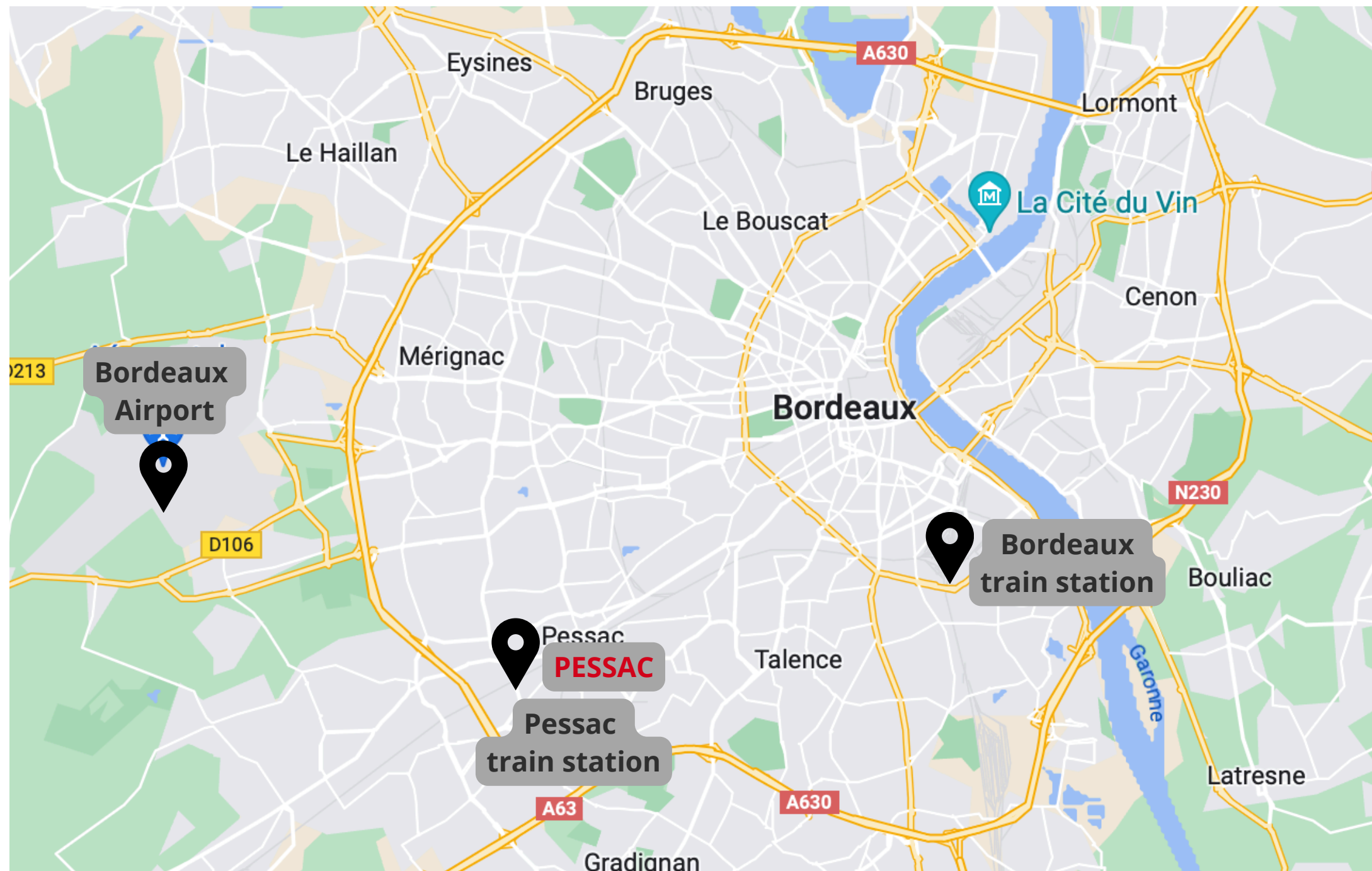
université  
de **BORDEAUX**





# 1. A SINGLE LOCATION

- Suggested dates: last week of June 2026
- Candidate city: Pessac (Gironde) - Bordeaux Metropole - university campus



## Pessac / competition venue :

- from Bordeaux airport =
  - 15 min by car
  - 40 min by public transport
- from Bordeaux train station =
  - 20 min by car
  - 25 min by public transport
- from Pessac train station =
  - 4 min by car
  - 12 min by public transport



# 1. A SINGLE LOCATION

## UNITY OF COMPETITION VENUES, ACCOMMODATIONS AND CATERING FACILITIES

- 2 nearby competition venues => 3 km apart
- Tramway B :  
Pessac train station => Campus = 9 min
- WUC Handball Pessac 2026 village at the heart of the campus









## 2. ADAPTED SPORTS FACILITIES

### Competition venues Bellegrave :





## 2. ADAPTED SPORTS FACILITIES

### Competition venues Bellegrave :



**Pessac Handball Club's matches - Division 2 female**



## 2. ADAPTED SPORTS FACILITIES

### Competition venues Bellegrave :



**Organization = Pessac Handball Club**

### International U21 matches France - Spain / March 2022





## 2. ADAPTED SPORTS FACILITIES

### Competition venues Bellegrave :



Prepa match LNH 1st division M  
Toulouse - Chambéry / January 2020  
Organisation = Pessac Handball Club

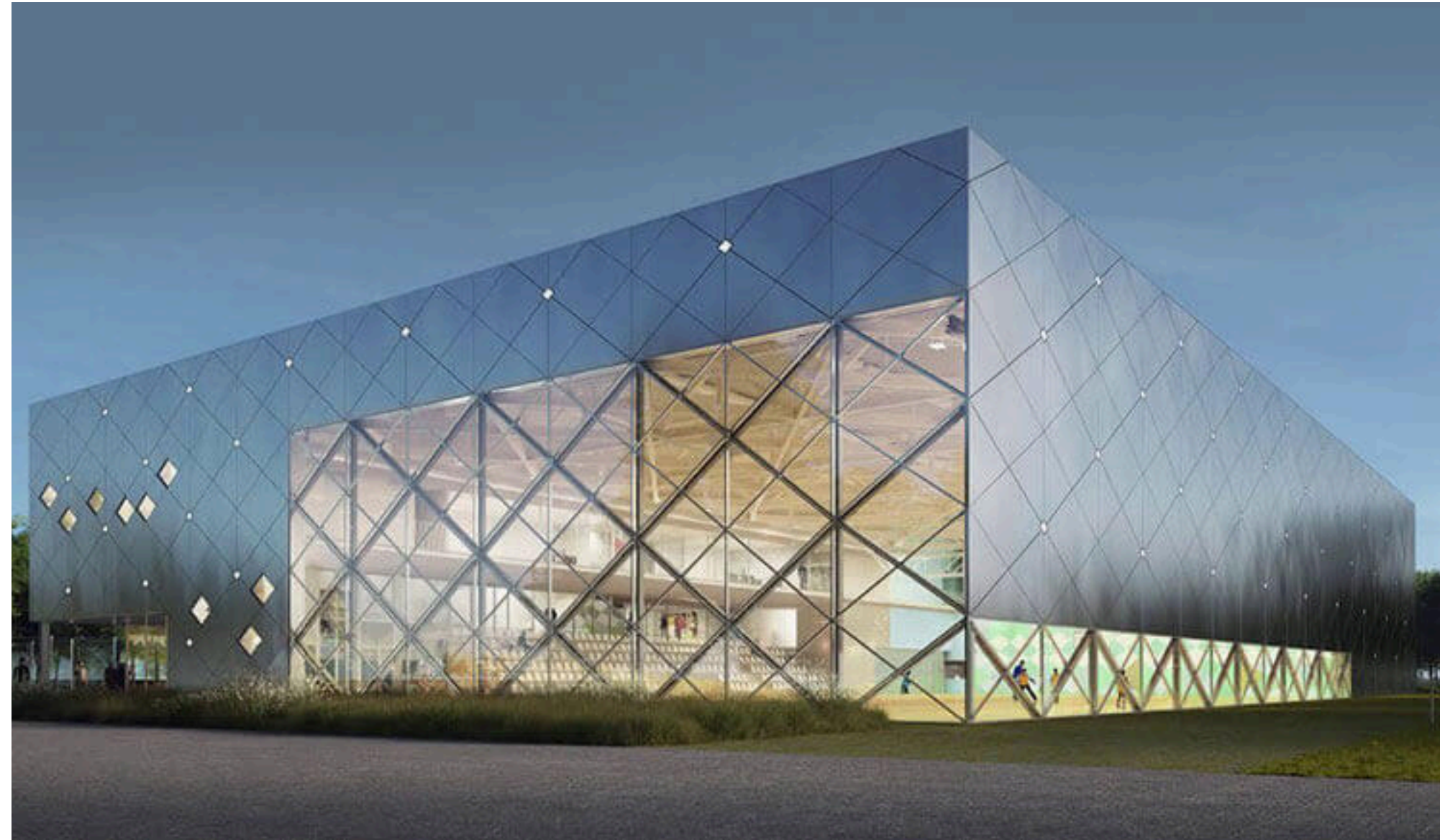


## 2. ADAPTED SPORTS FACILITIES

---

### Competition venues SMART:

- Sport Movement  
Ambition Research  
Technology
- => **Connected gym**
- Equipped for live broadcasting of matches
  - Medical center
  - Connected physical preparation room





## 2. ADAPTED SPORTS FACILITIES

### Competition venues SMART:





## 2. ADAPTED SPORTS FACILITIES

### Competition venues SMART:





## 2. ADAPTED SPORTS FACILITIES

### Competition venues SMART:



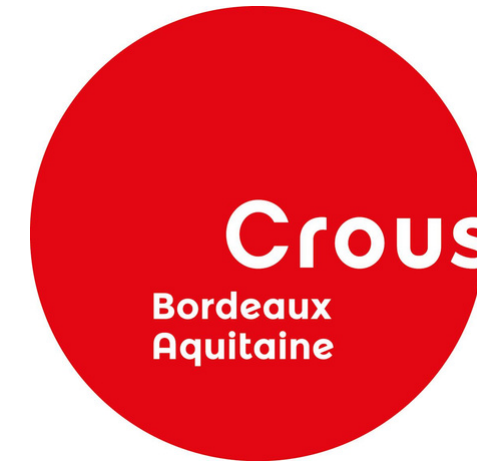


### 3. A STRONG COMMITMENT FROM LOCAL PLAYERS

---

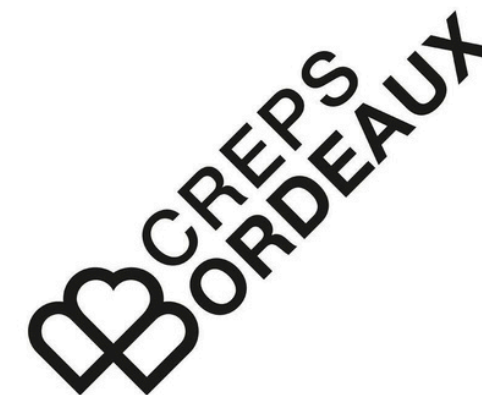
- **CROUS**

- **Team accommodation and catering**
- **Partner in National University Championships organized by Nouvelle-Aquitaine University League**



- **CREPS de Bordeaux**

- **2 training rooms**
- **Medical center**
- **Accommodation for staff/referees**





### 3. A STRONG COMMITMENT FROM LOCAL PLAYERS

---



- **Bordeaux University**
  - **SMART**
  - **Training rooms available**
  - **Room for ceremonies**
  - **Logistical support for SUAPS staff - specialist handball teachers**
- **STAPS Bordeaux**
  - **Collaboration : Sport Management specialization**
  - **Mobilization of 60 volunteering students for the organization of this event**
  - **Meeting rooms made available to teams**
  - **Organization of a scientific symposium**



## 4. A SCIENTIFIC OPENING

- Organization of a symposium about optimizing performance in competitive handball.
- Use by teams and coaches of SMART digital tools :
  - Tactical analysis
  - Gesture analysis
  - Digital tools for real-time performance analysis





## 5. AN ATTRACTIVE CULTURAL ENVIRONMENT

- A desire to showcase the special characteristics of our region
- Organization of a wine tasting = national partnership with Château Luchey Halde, located in Mérignac.
- Opportunity to visit the Bassin d'Arcachon and in particular the Dune du Pilat
- Visit Bordeaux and its historical monuments...

